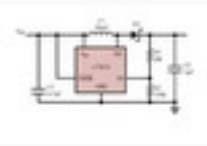


DC/DC Wandler LT1615 5er Pkg.

Neuhold Elektronik

DC/DC Wandler LT1615 5er Pkg.



Artikel Nr.: N2500

DC/DC Wandler LT1615 5er Pkg.

Step-Up Wandler im SOT-23 Gehäuse mit einem Ausgangsstrom bis zu 350 mA, Eingangsspannung 1,2- 15V, Ausgangsspannung bis zu 34V. Typ: LT1615IS5

DESCRIPTION

The LT®1615/LT1615-1 are micropower step-up DC/DC converters in a 5-lead SOT-23 package. The LT1615 is designed for higher power systems with a 350mA current limit and an input voltage range of 1.2V to 15V, whereas the LT1615-1 is intended for lower power and single-cell applications with a 100mA current limit and an extended input voltage range of 1V to 15V. Otherwise, the two devices are functionally equivalent. Both devices feature a quiescent current of only 20mA at no load, which further reduces to 0.5mA in shutdown. A current limited, fixed off-time control scheme conserves operating current, resulting in high efficiency over a broad range of load current. The 36V switch allows high voltage outputs up to 34V to be easily generated in a simple boost topology without the use of costly transformers. The LT1615's low off-time of 400ns permits the use of tiny, low profile inductors and capacitors to minimize footprint and cost in space-conscious portable applications.

Download Datenblatt

Preis : 2.95 EUR