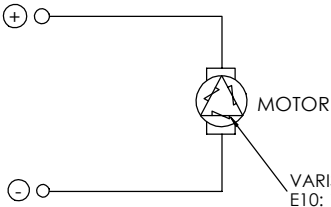
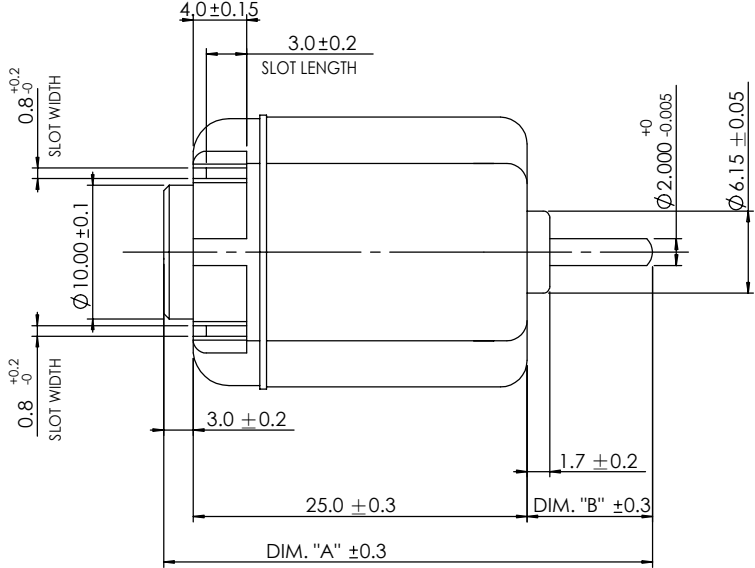
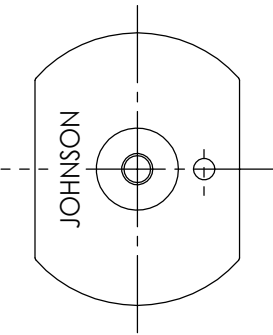


ALT.	REF.	DESCRIPTION	DATE	BY
A	SRF#25531	FIRST ISSUE(SCN#01081114)	20080908	XW

ROTATION



CIRCUIRITY

- NOTES :
1. NUMBER OF SLOTS/POLES: 3 .
  2. MAX POWER OUTPUT: 0.848 WATTS REF..
  3. OPERATING TEMPERATURE OF MOTOR: -40 - +85 °C.
  4. LENGTH OF MOTOR, DIM. "A", TO BE 37.4 mm.
  5. FRONT EXTENSION, DIM. "B", TO BE 9.40 mm WHEN MEASURED WITH SHAFT PUSHED AGAINST PLASTIC END CAP.
  6. DIRECTION OF ROTATION : ANTI-CLOCKWISE WHEN VIEWING MOTOR OUTPUT END WITH POSITIVE VOLTAGE APPLIED TO POSITIVE TERMINAL.
  7. END PLAY : 0.3 mm MAX.

DWN. BY XW	CHK. BY	APP. BY
Date (yyyymmdd) 20080908	Date (yyyymmdd)	Date (yyyymmdd)
MATERIAL :		
FINISH :		
General Tolerance : ISO 2768-1 Class m (Unless specified)		
ALL DIMENSIONS ARE IN MILLIMETRES		
SCALE 2.5:1		
TITLE MOTOR OUTLINE(NF140G)		
DWG No. 1999-1010176		
SHEET 1 OF 1		

Cpk	Characteristics
> 1.67	Key Product
> 1.33	Customer Significant
> 1.00	
Not Required	

JOHNSON ELECTRIC  
JOHNSON ELECTRIC GROUP OF COMPANIES  
(JOHNSON ELECTRIC)  
this document is the Property of Johnson Electric and the information therein contains  
is confidential. Unauthorised reproduction or other use thereof, whether directly or  
indirectly, in whole or in part, is strictly prohibited. All products made or otherwise  
derived directly or indirectly from this document are proprietary to Johnson Electric.  
Copyright Johnson Electric S. A. 2008 . All rights reserved.