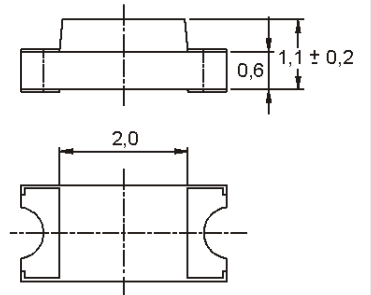
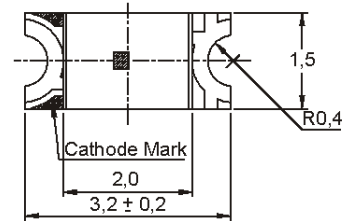
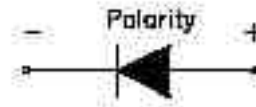
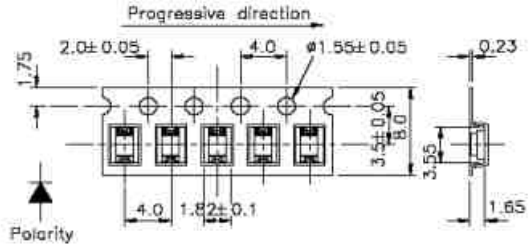


NEUHOLD - ELEKTRONIK INFO

Griesplatz 1 und Griesgasse 33 A 8020 Graz Fax. 0316/717419 Telefon 0316 - 711245
www.neuhold-elektronik.at

EVERLIGHT SMD Leuchtdioden klar 1206



Technische Daten

TOLERANCES UNLESS DIMENSION ± 0.1
ANGLE ± 0.5
UNIT:mm

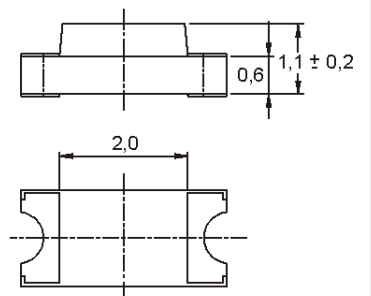
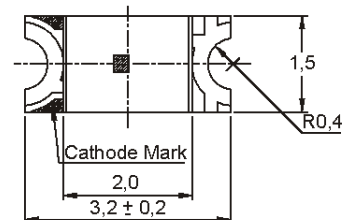
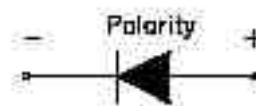
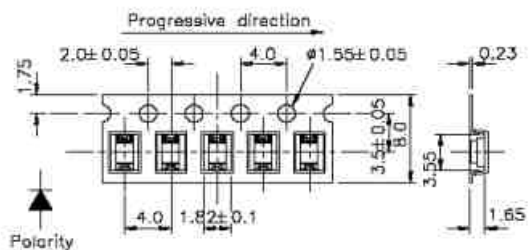
EL15-	Colour	WL [nm]	VA [°]	LI [mcd]	@I _F [mA]	U _F [V]
21SURC/S53	rot	632	140	38	20	2
21UYC/S53	gelb	591	140	39	20	2
21SYGC/S5	grün	575	140	15	20	2

WL = Peak Emission Wav elength, VA = Viewing Angle, LI = Typ. Luminous Intensity, I_F = Forward Current, U_F = Forward Voltage

NEUHOLD - ELEKTRONIK INFO

Griesplatz 1 und Griesgasse 33 A 8020 Graz Fax. 0316/717419 Telefon 0316 - 711245
www.neuhold-elektronik.at

EVERLIGHT SMD Leuchtdioden klar 1206



Technische Daten

TOLERANCES UNLESS DIMENSION ± 0.1
ANGLE ± 0.5
UNIT:mm

EL15-	Colour	WL [nm]	VA [°]	LI [mcd]	@I _F [mA]	U _F [V]
21SURC/S53	rot	632	140	38	20	2
21UYC/S53	gelb	591	140	39	20	2
21SYGC/S5	grün	575	140	15	20	2

WL = Peak Emission Wav elength, VA = Viewing Angle, LI = Typ. Luminous Intensity, I_F = Forward Current, U_F = Forward Voltage