

FC-140RF/SF

MABUCHI MOTOR

Carbon-brush motors

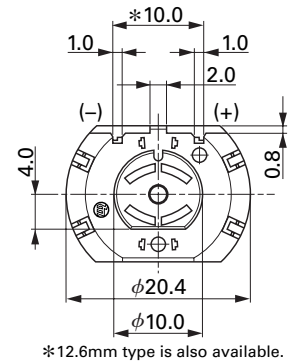
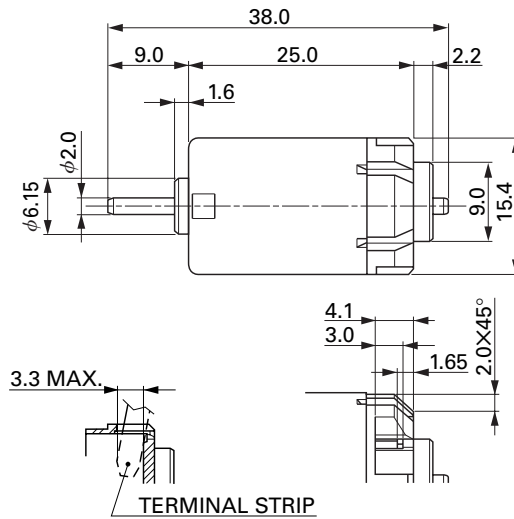
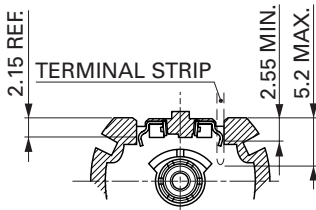
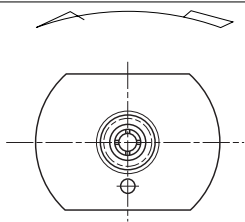
OUTPUT : 0.1W~2.0W (APPROX)

WEIGHT : 23g (APPROX)

Typical Applications Automotive Products : Rearview Mirror / Retractable Rearview Mirror /
Door Lock Actuator / Head Light Beam Level Adjuster

MODEL	VOLTAGE		NO LOAD		AT MAXIMUM EFFICIENCY				STALL			
	OPERATING RANGE	NOMINAL	SPEED	CURRENT	SPEED	CURRENT	TORQUE		OUTPUT	TORQUE		CURRENT
			r/min	A	r/min	A	mN-m	g-cm	W	mN-m	g-cm	A
FC-140RF-09490	8~16	12V CONSTANT	7900	0.042	5910	0.12	1.03	10.5	0.63	4.07	41	0.37
FC-140RF-061000	9~16	13.5V CONSTANT	4300	0.028	2900	0.058	0.73	7.5	0.22	2.25	23	0.12
FC-140SF-11240	10~16	13.5V CONSTANT	12800	0.070	10270	0.28	1.82	18.6	1.96	9.21	94	1.15

DIRECTION OF ROTATION



*12.6mm type is also available.

UNIT: MILLIMETERS

FC-140RF-09490

12.0V

FC-140SF-11240

13.5V

